

Durable Corporation
(800) 537-1603

Model: TTB-10

**MODEL: TTB-10
MOLDED TRAILER AND
CRANE BUMPER**

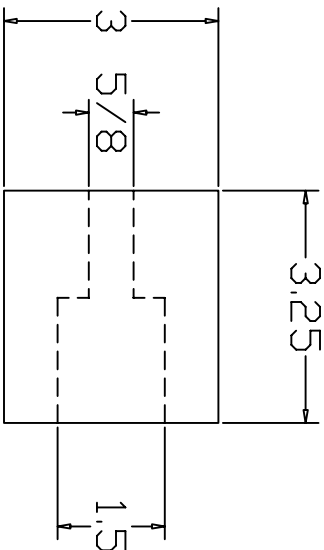
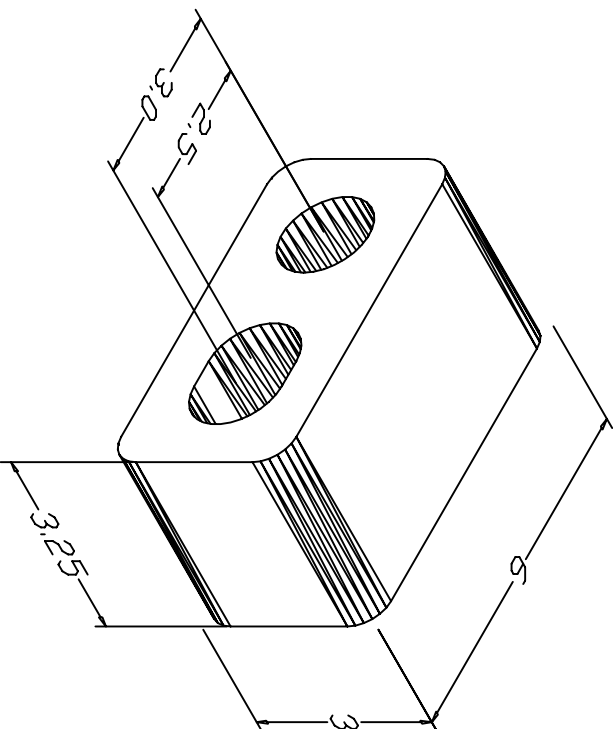
Size

- Overall Length 6
- Overall Thickness 3-1/4
- Height 3
- Anchor Holes 2-1/4 to 3-1/4
- Total Weight 1.25 lbs

Date: 8/6/99

Scale: Full

Please Note: Weights are calculated and are not actual and overall tolerance may vary + or - 1/4".



TB-10 is molded from a nylon & polyester fibre reinforced rubber of 80 (+ or -) 5 durometer, and has an average impact resistance of 95% under ASTM 1170.