

Durable Corporation
(800) 537-1603

Model: TB-20

**MODEL: TB-20
MOLDED TRAILER AND
CRANE BUMPER**

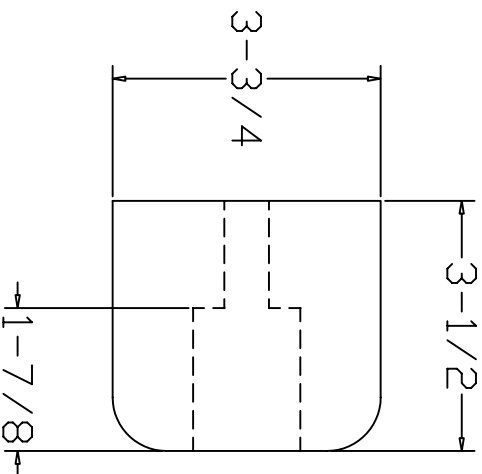
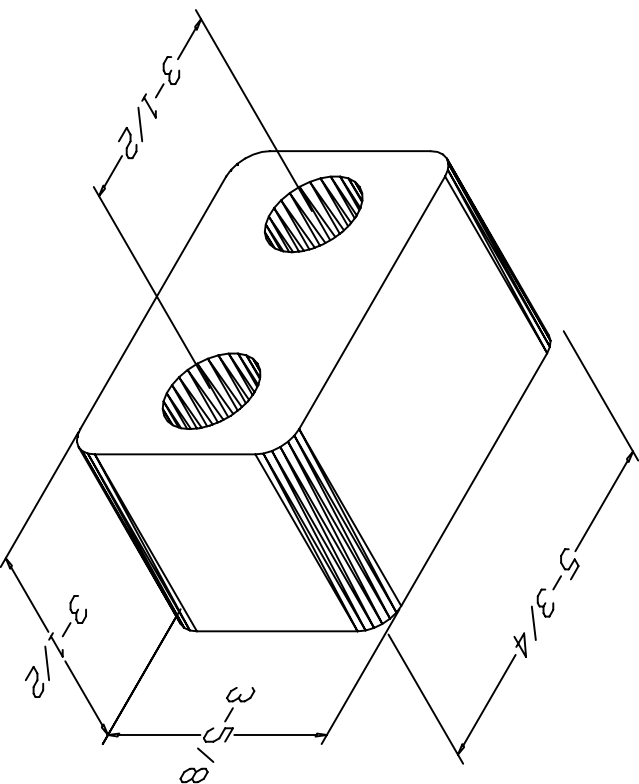
Size

Overall Length	5-3/4
Overall Thickness	3-1/2
-Height	3-5/8
-Anchor Holes	3-1/2
Total Weight	3.25 lbs

Date: 8/6/99

Scale: Full

Please Note: Weights are calculated and are not actual and overall tolerance may vary + or - 1/4".



TB-20 is molded from a nylon & polyester fibre reinforced rubber of 80 (+ or -) 5 durometer, and has an average impact resistance of 95% under ASTM 1170.