



DURABLE
CORPORATION
SINCE 1923

GRAND-STAND DELUXE ANTI-FATIGUE MATTING



Grand-Stand Deluxe is a 3/32" thick rubber surface permanently bonded to a resilient natural rubber foam base that provides excellent comfort. Grand-Stand Deluxe also features beveled edges on all sides for an added extra measure of safety. Thermoset Vulcanized Rubber (SR) features 100% virgin synthetic rubber construction, greater flexibility, and homogenous color throughout. Your best choice for long-term wear.

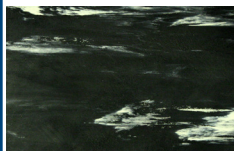
Material: 3/32" Thermoset Vulcanized Rubber (SBR)
smooth surface bonded to a 3/8" resilient
rubber foam base.

Thickness: 1/2"

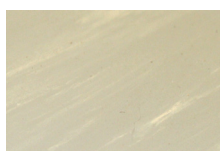
Surface: Smooth:

Ideal for use in: Banks, Mailrooms, Pharmacies, Airports,
Labs, Factories, Retail Checkouts

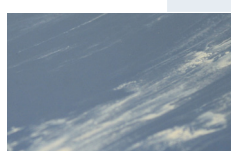
Colors:



Marble Black



Marble Gray



Marble Blue

Colors may vary from those shown.
Please call for samples.

Standard Sizes

Item No.	Size	Weight lbs./ea.
238S2436	24" x 36"	11
238S3660	36" x 60"	29

Cut Lengths

Item No.	Size	Weight lbs./sq.ft.
238C36	36" wide	1.8

800-537-1603 • Local 419-668-8138 • Fax: 800-537-6287 • Local Fax 419-668-8068
www.durablecorp.com • sales@durablecorp.com