



DURABLE
CORPORATION
SINCE 1923

GRAND-STAND BEAUTY & BARBER ANTI-FATIGUE MATTING



Custom made mats feature a long wearing rubber surface bonded to a resilient rubber foam base. Built-in beveled edge base adds an extra measure of safety and virtually eliminates tripping. The most comfortable cushion available to the beauty and barber market.

Material: 3/32" Thermoset Vulcanized Rubber (SR) surface bonded to a foam base

Thickness: Deluxe, 1/2"

Surface: Smooth

Warranty: 2 year replacement warranty against defects in material and workmanship under normal usage and wear.

NOTE: This warranty applies to identical replacement and does not cover damage from chairs, stools, tables, heavy equipment or high heels.

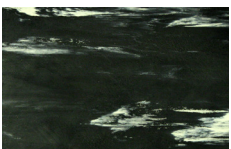
Colors:



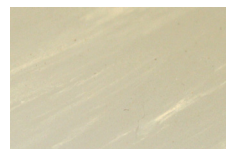
Solid Black



Marble Blue



Marble Black



Marble Gray

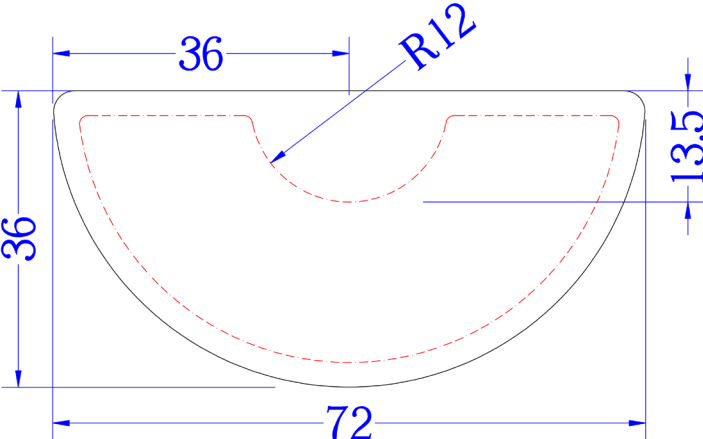
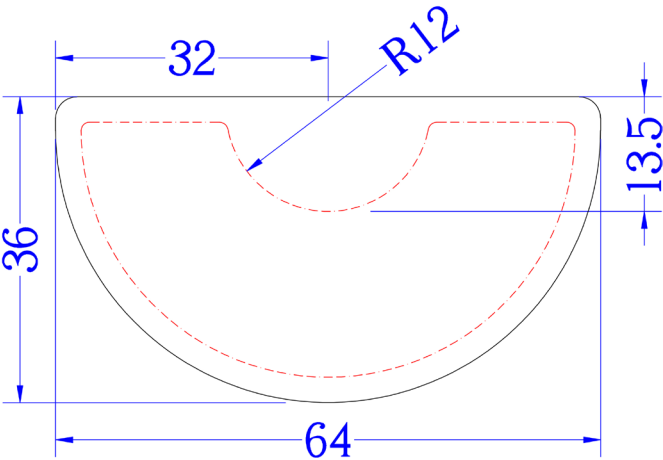
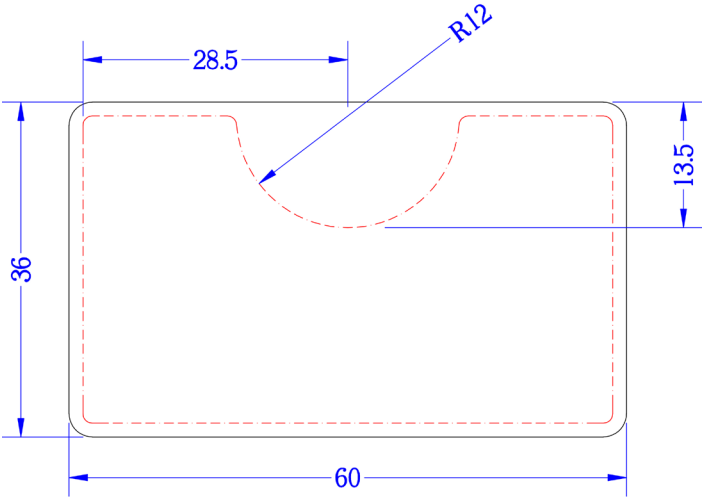
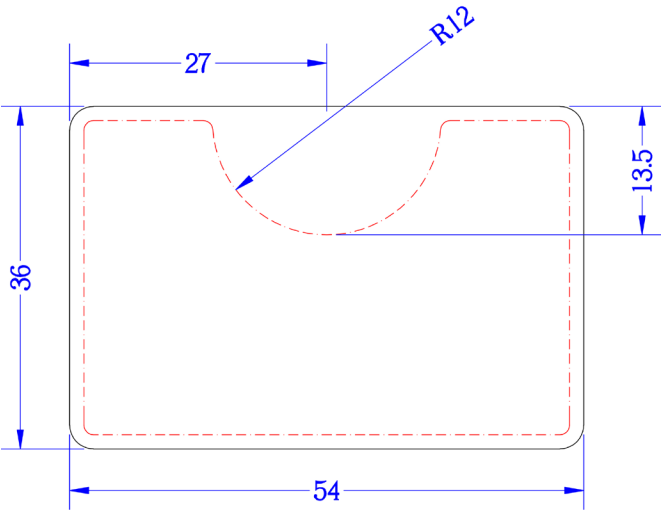
Deluxe Sizes 1/2" Thick

Item NO.	Size	Shape	Weight
238BB3654	36" x 54"	Rectangle	24 lbs.ea.
238BBR3654	36" x 54"	Circle	24 lbs.ea.
238BB3660	36" x 60"	Rectangle	27 lbs.ea.
238BBCR64	36" x 64"	Circle	27 lbs.ea.
238BBR3672	36" x 72"	Circle	32 lbs.ea.



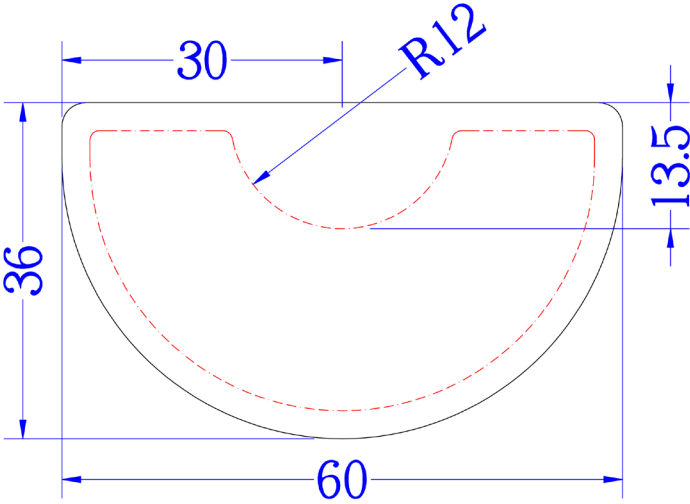
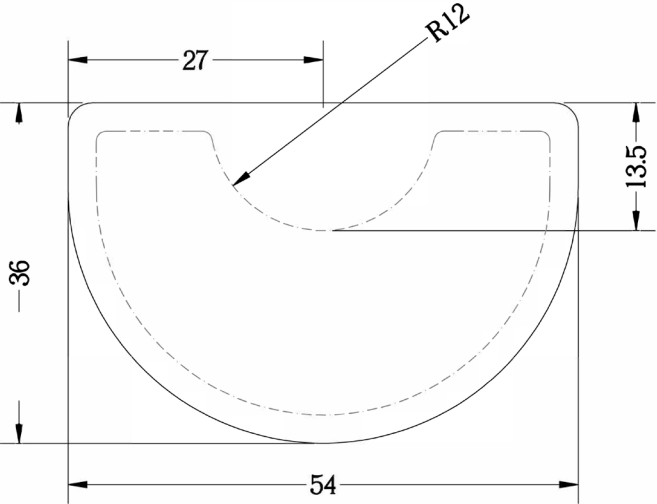
800-537-1603 • Local 419-668-8138 • Fax: 800-537-6287 • Local Fax 419-668-8068
www.durablecorp.com • sales@durablecorp.com

Salon Mat Drawings



Half Round

Half Round



Half Round

Half Round