



Features

- Resistant to many solvents, chlorine, inorganic diluted salt solutions, detergents and salt water
- Protects against mildew and ultraviolet lights
- Mat has beveled edging on all sides
- NO art charge for camera ready artwork
- Lead time four weeks after art approval
- Vinyl backed to protect floors or unbacked to promote excellent drainage
- Logo may contain up to 20 colors

Maintenance

- Shake to remove dirt
- Clean with light detergent or water
- Allow to dry completely

Colors:



Material: 100% extruded PVC Vinyl loop mat with or without vinyl backing

Thickness: 3/8"

Weight: Unbacked 0.82 lbs /sf
Backed 0.9 lbs /sf

Standard Sizes

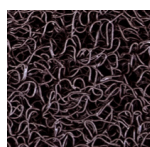
2'x3', 3'x4', 3'x5',
3'x10', 4'x6', 4'x8',
4'x10', 4'x12', 4'x16',
4'x20'

Custom Sizes

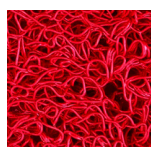
Available in custom
sizing.



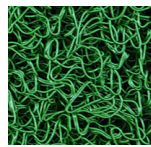
Sand - 14



Brown - 16



Red - 5



Turf Green-8



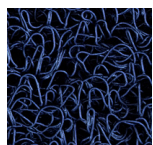
Beige - 6



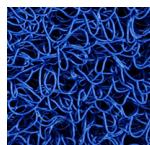
Orange - 7



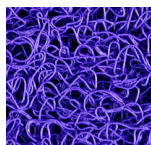
Crimson - 15



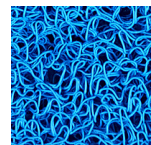
Navy Blue - 4



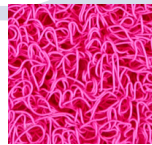
Royal Blue-13



Purple-19



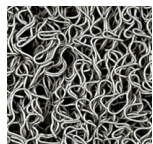
Marine Blue-17



Pink - 20



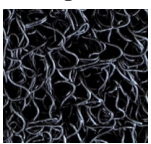
Yellow - 2



Gray - 9



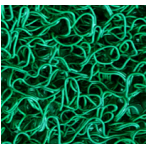
Light Gray-11



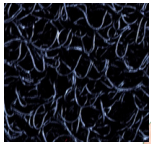
Charcoal - 10



White - 1



Grass Green-12



Black - 3

Please Note: Colors may vary from those shown. Selections should be made from actual samples.